



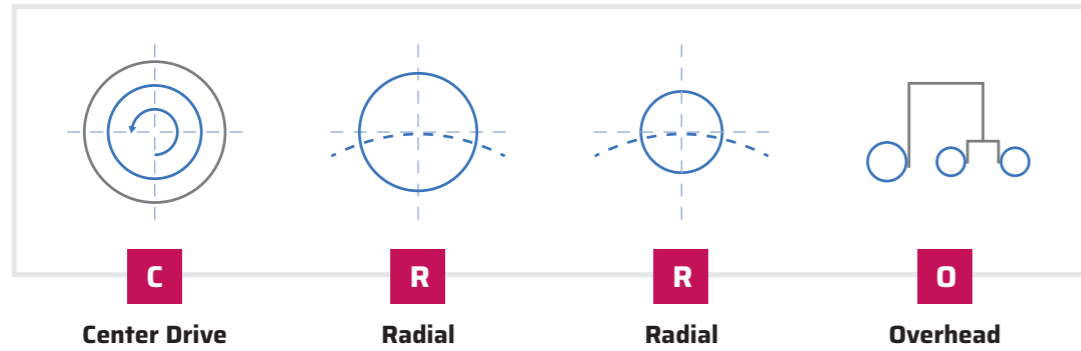
# ProSlitter

Station type slitter

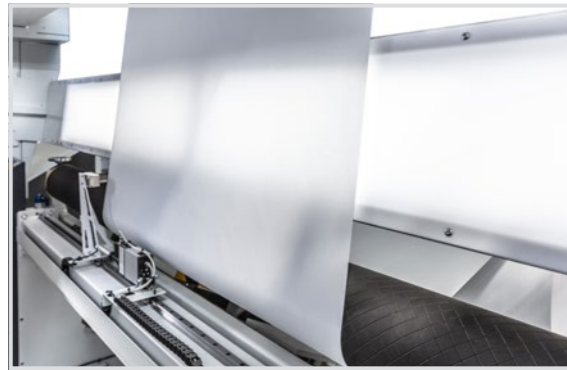
The new ProSlitter series consisting of BlackLine, BlueLine and SilverLine is the new standard in productive slitting of flexible films.

**BEST OF BOTH WORLDS**

Succeeding the well proven Atlas CW and Kampf Unislit series, ProSlitter marks the new era of highly efficient slitting machines for commodity films.



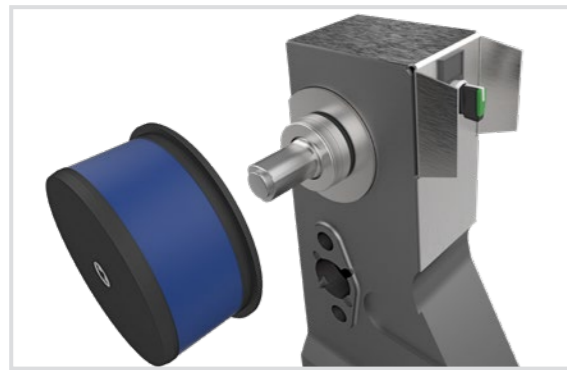
**STANDARD RANGE OF OPTIONS.  
INCREASING YOUR LEVEL OF PRODUCTIVITY.**



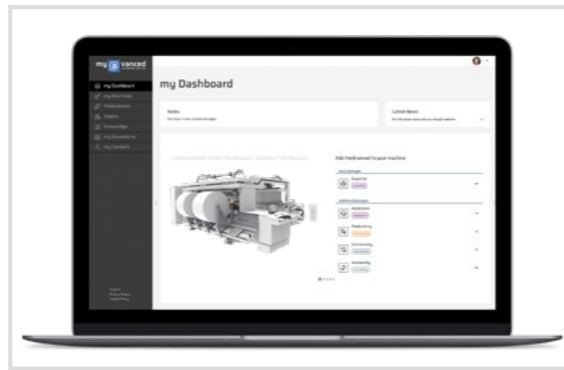
**Light inspection**  
Inline quality check at first glance, the option to secure your quality



**Splicing table**  
The option for faster and safer changing of the parent roll and splicing of the film



**Chucking head**  
The new quick clamping system for chucks enables tool-free replacement in a matter of seconds



**Optional my@vanced and the@vanced**  
Make change accessible

**ProSlitter CRRO SilverLine**  
DESIGNED FOR PURE PRODUCTIVITY

**Technical Data**

**Materials**  
BOPP, BOPET, BOPE, BOPA, PLA, PS  
Cast, blown, calendered, metallized films, laminates

**Material thickness**  
8 - 125 µm

**Material widths**  
2,500 · 3,000 · 3,500 mm

**Parent roll diameters**  
1,300 · 1,500 mm

**Finished roll diameters**  
1,200 mm

**Finished roll weights**  
2 · 3 · 4 tons

**Slitting systems**  
Razor blade cut in groove ·  
burst cut in groove

**Slitting widths**  
250 - 3,500 mm

**Winding cores**  
3" · 6"

**Machine speed**  
1,000 · 1,200 m/min

**ProSlitter.**  
Focused on Productivity.



**Fully electric**  
No hydraulics for a clean operation.

**Versatile and efficient**  
ProSlitter SilverLine is the efficient slitter for cast, blown and calendered primary films and the ideal secondary slitter for biax films.

**Rewinding fast and accurate**  
Saving valuable set up time with Quick-Lock chucking heads reducing change over time.

## Your partners worldwide

### Germany

**Kampf Schneid- und Wickeltechnik GmbH & Co. KG**  
Mühlener Straße 36-42 • 51674 Wiehl  
fon +49 2262 81-0  
info@kampf.de  
www.kampf.de

### United Kingdom

**Atlas Converting Equipment Ltd.**  
8 Wolseley Road, Woburn Road Industrial Estate  
Kempston • Bedford, MK42 7XT  
fon +44 1234 852553  
sales@atlasconverting.com  
service@atlasconverting.com  
www.atlasconverting.com

### USA

**Kampf Machinery Corporation**  
Kennedy Technology Center  
900 River Street, Unit H • Windsor, CT-06095  
fon +1 860 640 0040 • info@kampfusa.com  
www.kampfusa.com

**Atlas Converting North America, Inc.**  
9801-F Southern Pine Boulevard • Charlotte, NC 28273  
fon +1 704 587 2450  
sales.usa@atlasconverting.com  
service.usa@atlasconverting.com  
www.atlasconverting.com

### China - Hong Kong

**Kampf (Hong Kong) Co. Ltd.**  
Room 803, 8/F • Wanchai Commercial Centre  
194-204 Johnston Road, Wanchai • Hong Kong  
fon +852 2882 1136  
kampfhk@kampf.com.hk

### China - Shanghai

**Kampf Machinery (Shanghai) Co. Ltd.**  
302-304, Floor 3 • No. 8, Sunnyworld Center  
Lane 1518, South Yumin Road  
Jiading District • 201801 Shanghai  
fon +86 21 5951 8030  
xiaoguang.hou@kampf-shanghai.com.cn

### India

**Kampf Machinery India Pvt. Ltd.**  
413, fourth floor, Atlantis Heights Sarabhai  
Compound, Near Genda Circle • 390007 Vadodara, Gujarat  
fon +91 962 404 4922  
service@kampf-india.com

**Kampf Machinery India Pvt. Ltd.**  
Office no. 1121, Tower no. A, Plot No. A-40, ITHUM Building  
Sector-62 • 201309 Noida, Uttar Pradesh  
fon +91 96240 89896  
sales@kampf-india.com